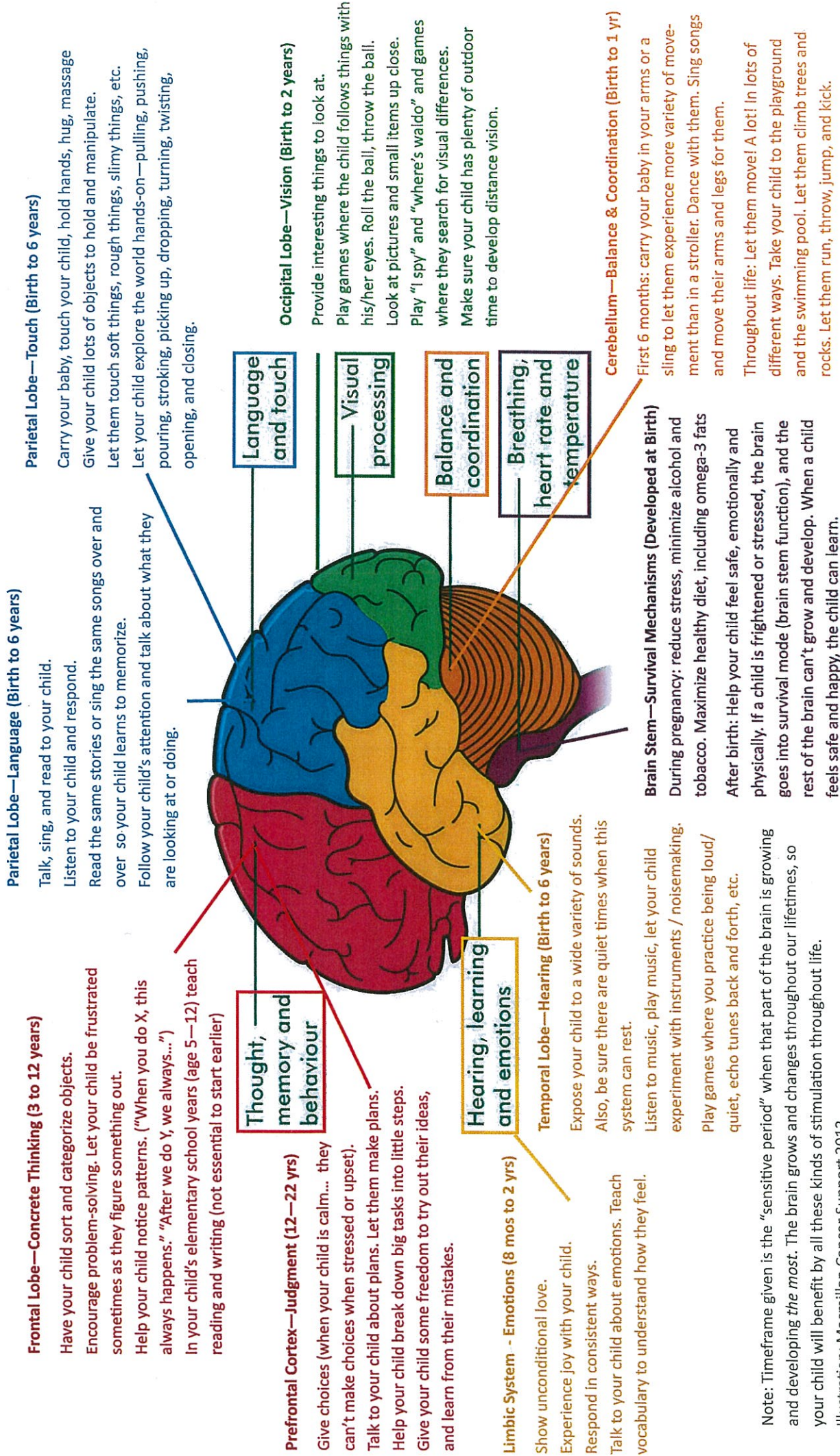


Brain Development—How you can help.

Important!! Remember to balance stimulation with rest and quiet time to process it all!



Note: Timeframe given is the “sensitive period” when that part of the brain is growing and developing the most. The brain grows and changes throughout our lifetimes, so your child will benefit by all these kinds of stimulation throughout life.

Illustration: Macmillan Cancer Support 2012